

P R O D U C T C A T A L O G



Built for Commercial.
Mini PCs & Edge Hardware.

Contents

	03
About	04
Manufacturing	05
Trusted Partners	06
TAA / NDAA Compliance	07
Access Pro	10
Access ARM	12
Ally	15
Ally Pro	17
Ally Pro ARM	19
Byte	24
Elite	27
IVYU	30
Full Specifications	46
Contact	



Purpose-built mini PCs for commercial and edge environments



Azulle is a U.S.-based manufacturer of mini PCs designed exclusively for commercial and edge deployment.

Integrated into digital signage networks, kiosk infrastructure, retail environments, enterprise workspaces, and distributed edge systems.

Engineered for Commercial Environments

Architecture, thermal design, and component selection defined against real deployment requirements – not adapted from consumer designs.

U.S.-Based Support Direct Product Knowledge

U.S.-based engineers with system-level knowledge of every platform we produce. Three-year warranty standard across the product line.



End-to-end development and manufacturing under a single operating model

CAPABILITIES

Owned Manufacturing Facility

ISO- certified production in Asia, fully under Azulle oversight – consistent process controls.

ODM/OEM and Private Label

Your brand on commercially validated platforms – configured to your specifications, built to our standards.

Pre-Shipment System Configuration

BIOS, firmware, and OS validated before shipment – ready for direct integration on arrival.

Direct Engineering Collaboration

One U.S.-based team. Accountable from specification through delivery.

PROGRAM ASSURANCES



ISO-Certified Facilities in Asia



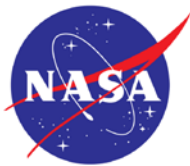
NDA-first engagement with dedicated tooling



U.S.-based engineering from spec through production



Trusted by Industry Leaders



When compliance is a requirement, we have a configuration for it

For deployments in government, defense, and federally funded environments, Azulle offers fully documented TAA and NDAA compliant configurations – available on any product, upon request.

Available on any product
[On request](#)



Whole-device compliant configurations – RAM, storage, ethernet, and wireless chipsets all documented.



Available through our South Korea manufacturing facility. Any product, any configuration.

Relevant for

- Federal Agencies • Defense Contractors
- GSA Schedule Procurement • State & Local Government
- Federally Funded Education • Healthcare IT
- Enterprise with Government • Adjacent Requirements



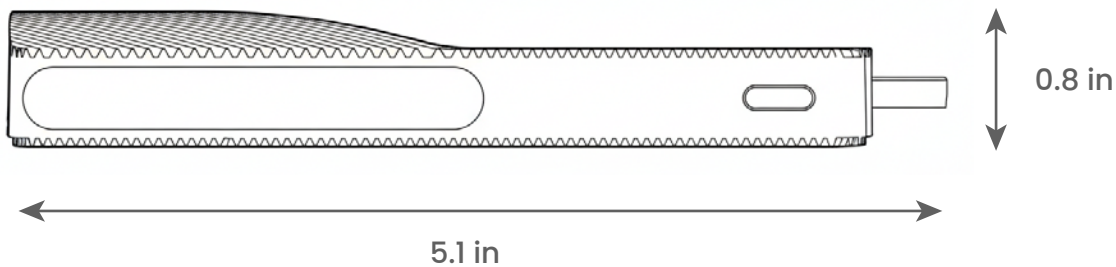
ACCESS



ACCESS PRO

[Back to Contents](#)


Fanless, Silent Mini PC Stick for Space-Constrained Commercial Deployments



The smallest form factor in the Azulle lineup. Designed for deployments where space is the constraint — behind screens, inside kiosks, or anywhere a full box won't fit. Fanless and completely silent.

3 YEAR WARRANTY

U.S. BASED SUPPORT

Where it's used: • Digital Signage • Kiosk Systems
• Retail Point-Of-Display • Meeting Room Signage
• Space-Constrained Edge Installations



Fanless
Silent



Processor
Intel® Twin Lake (N150)
Intel® Alder Lake (N100)



Ultra-compact
5.1 x 2.0 x 0.8 in



Memory
Embedded 4/8GB; LPDDR5



Operating System
Windows 11 Pro®, Windows IoT®, Linux® Ubuntu®



Storage
64/128GB eMMC

[Full Specifications](#)
[More ▶](#)
[Byte](#)
[Elite](#)
[Ally](#)

Ports & Features

[Back to Contents](#) 



[Full Specifications](#)

More ▶

[Byte](#)

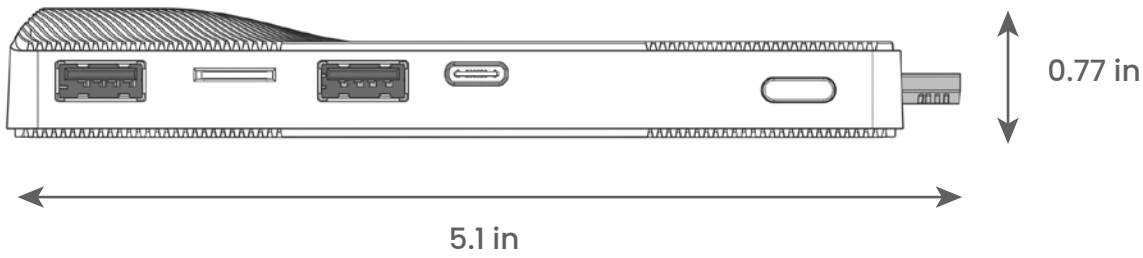
[Elite](#)

[Ally](#)

ACCESS ARM

[Back to Contents](#) 

Fanless, Silent ARM-Based Stick for Android and Linux Deployments



The ARM variant of the Access line — purpose-built for deployments running Android 14 or Linux. Lower power draw, native Android compatibility, and the same ultra-compact form factor as the Access Pro.

 3 YEAR WARRANTY

 U.S. BASED SUPPORT

- Where it's used:**
- Android-Based Digital Signage
 - Linux Edge Nodes
 - Low-Power Kiosk Systems
 - Hospitality And Retail Display
 - IoT Edge Endpoints


 **Fanless**
Silent

 **Processor**
Rockchip RK3576

 **Ultra-compact**
5.1 x 2.1 x 0.77 in

 **Memory**
Embedded 4/8GB; LPDDR4X

 **Operating System**
Android 14®, Linux® Ubuntu®

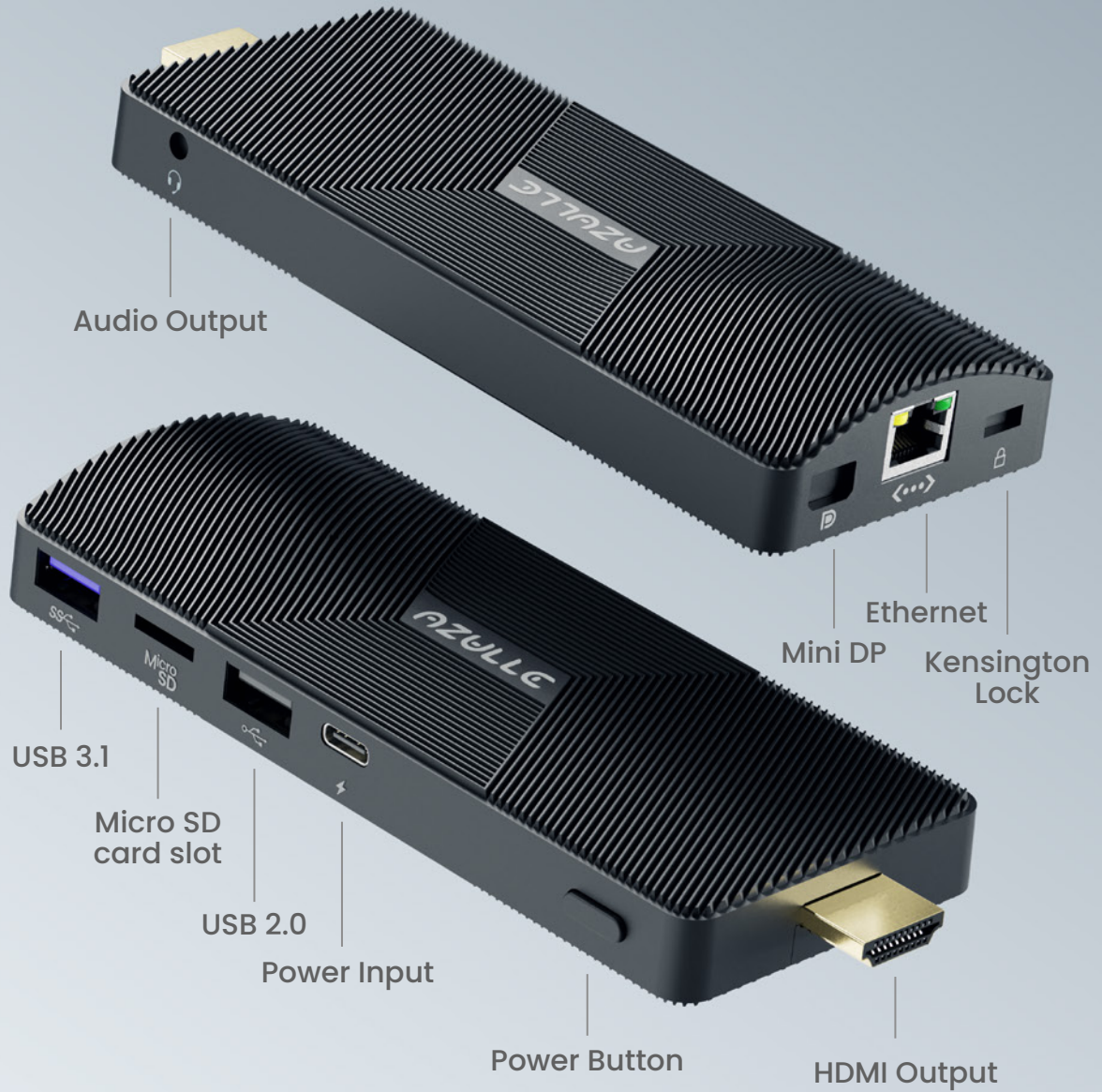
 **Storage**
64/128GB eMMC

[Full Specifications](#)

[More ▶](#) [Byte](#) [Elite](#) [Ally](#)

Ports & Features

[Back to Contents](#) 



[Full Specifications](#)

More ▶

[Byte](#)

[Elite](#)

[Ally](#)



ALLY

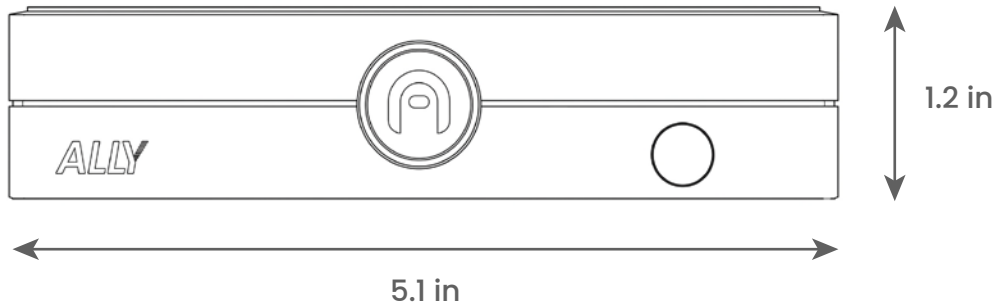




[Back to Contents](#)



Compact Fanless Mini PC for Dual-Display Commercial Deployments




The entry point into the Azulle box form factor. Fanless, dual-display capable, and built for deployments that need reliable 24/7 operation without the complexity of a modular platform. Straightforward to deploy at scale.

- Where it's used:**
- Digital Signage Networks
 - Kiosk Infrastructure
 - Retail Environments
 - Meeting Room Compute
 - Distributed Edge Deployments

 **Fanless**
Silent

 **Processor**
Intel® Twin Lake (N150)

 **Ultra-compact**
5 x 3.9 x 1.2 in

 **Memory**
Embedded 8/64GB DDR5

 **Operating System**
Windows 11 Pro®, Windows IoT®, Linux® Ubuntu®

 **Storage**
64GB eMMC

[Full Specifications](#)

[More ▶](#)

[Byte](#)

[Elite](#)

[Access](#)

Ports & Features

[Back to Contents](#) 



[Full Specifications](#)

More ▶

[Byte](#)

[Elite](#)

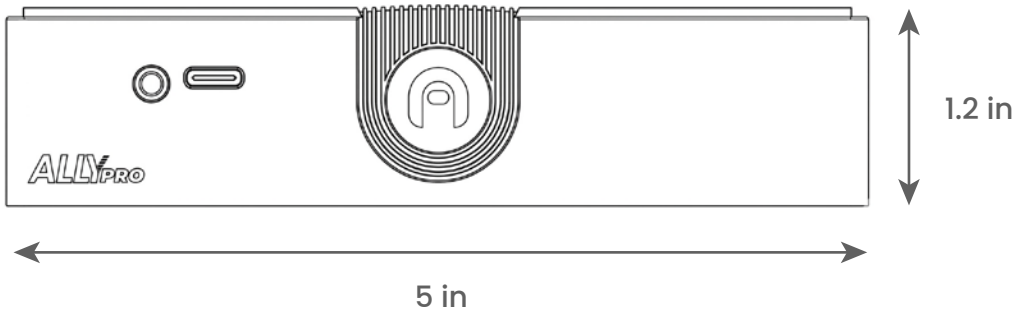
[Access](#)

ALLY PRO

[Back to Contents](#)



Compact Fanless Mini PC with Dual Ethernet, Dual HDMI, and Optional RS-232



Built for solution providers who need more connectivity in the same compact form. Dual Ethernet, dual HDMI 2.1, optional RS-232, and M.2 SSD expansion up to 8TB – all in a fanless design. The Ally Pro goes where the standard Ally reaches its limit.

- Where it's used:**
- IT Infrastructure
 - Industrial Automation
 - Digital Signage With Legacy Peripheral Integration
 - Multi-Display Commercial Environments
 - Solution Provider Deployments Requiring RS-232 Connectivity

 **Fanless**
Silent

 **Processor**
Intel® Twin Lake (N150)

 **Ultra-compact**
5 x 3.9 x 1.2 in

 **Memory**
Embedded 8GB; LPDDR4X

 **Operating System**
Android 14®, Linux® Ubuntu® 22.04

 **Storage**
128GB eMMC

[Full Specifications](#)

[More ▶](#)

[Byte](#)

[Elite](#)

[Access](#)

Ports & Features

[Back to Contents](#) 



[Full Specifications](#)

[More](#) ▶

[Byte](#)

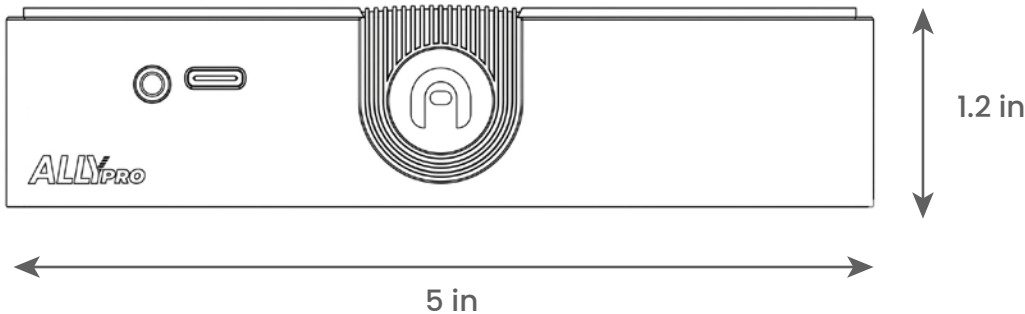
[Elite](#)

[Access](#)

ALLY PRO ARM

[Back to Contents](#)


ARM-Based Fanless Mini PC for Large-Scale Signage Rollouts



Powered by the Rockchip RK3576 — built for deployments that prioritize low power, Android or Linux compatibility, and plug-and-play simplicity across hundreds of locations. Streamlined I/O keeps installations clean and maintenance minimal.

Where it's used: • Large-Scale Digital Signage • Hospitality Display Systems
 • Retail And Venue Media Players • Android-Based Kiosk Deployments
 • Low-Power Distributed Edge



Fanless
Silent



Processor
Rockchip RK3576



Ultra-compact
5 x 3.9 x 1.2 in



Memory
Embedded 4/8GB; DDR5



Operating System
Windows 11 Pro®, Windows IoT®, Linux® Ubuntu®



Storage
64/128GB eMMC

[Full Specifications](#)
[More ▶](#)
[Byte](#)
[Elite](#)
[Access](#)

Ports & Features

[Back to Contents](#) 



[Full Specifications](#)

[More](#) ▶

[Byte](#)

[Elite](#)

[Access](#)



BYTE

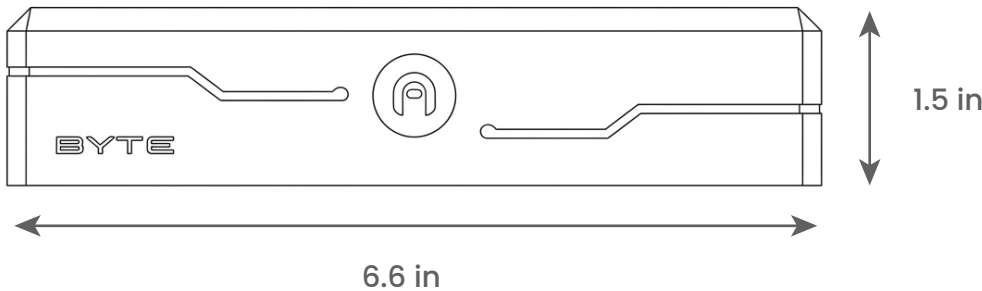


BYTE

[Back to Contents](#)



Modular Mini PC — Pre-Configured Before Shipment, Ready to Deploy on Arrival



The only product in the Azulle lineup with factory-installable modules. 4G LTE, RF, AI accelerator, PoE, serial ports, expanded USB, active cooling, storage expansion — selected before shipment so every unit in your batch arrives configured for its exact deployment environment. No on-site hardware changes.

- Where it's used:**
- IoT And Edge Deployments Requiring Cellular Connectivity
 - Remote Monitoring And Telemetry
 - AI Inference At The Edge
 - Industrial Environments With RS-232/RS-485 Device Integration
 - Multi-Site Rollouts Requiring Pre-Configured Hardware Batches



Cooling

Built-in active cooling system



Processor

Intel® Twin Lake (N150)



Ultra-compact

6.6 x 4.5 x 1.5 in



Memory

DDR5-4800 up to 32GB



Operating System

Windows 11 Pro®, Windows IoT®, Linux® Ubuntu®



Storage

eMMC: 64 GB or 128 GB, Upgradeable to 256 GB
SSD: Optional, Upgradeable to 960 GB

[Full Specifications](#)

[More ▶](#)

[Access](#)

[Elite](#)

[Ally](#)

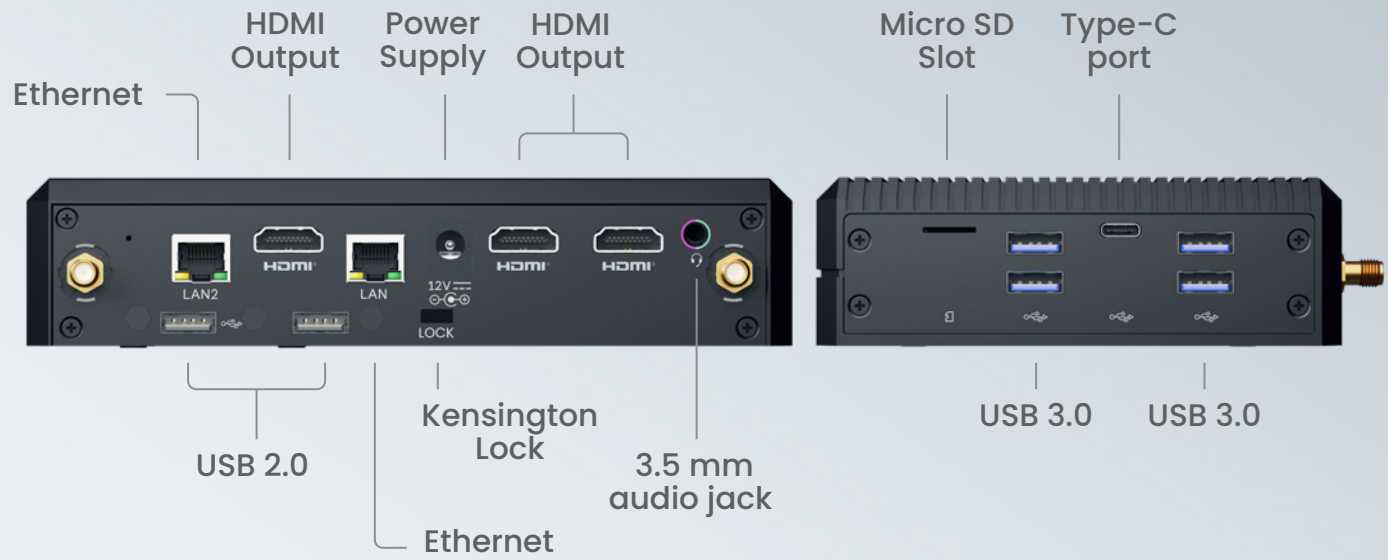
Casing / Ports & Features

[Back to Contents](#) 

Casing - Serial Module



Casing - Active Cooling Module



[Full Specifications](#)

[More ▶](#)

[Access](#)

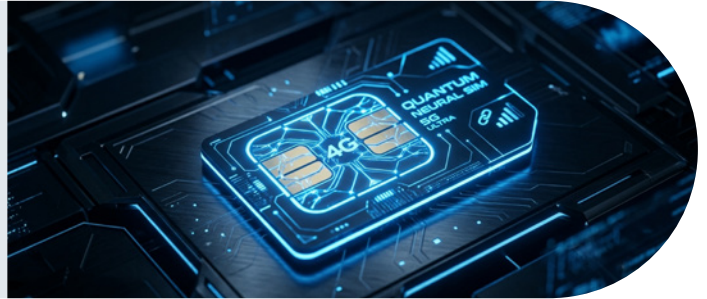
[Elite](#)

[Ally](#)

9 Modules

1 4G LTE Module

Add cellular connectivity via SIM card for remote and IoT deployments. Keeps devices online where wired networks are unavailable. Optional GPS support included.

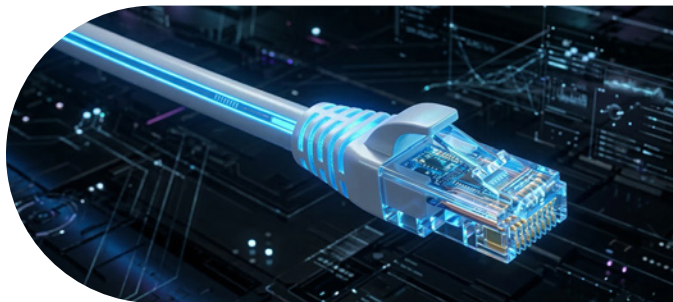
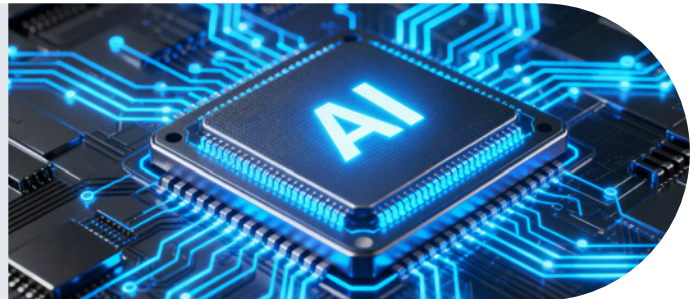


2 RF Module

Enables wireless data transmission and sensor telemetry for industrial and IoT environments. Supports real-time monitoring across RF networks without additional hardware.

3 AI Accelerator

Run AI workloads directly on the device — no cloud required. Expands the Byte TWL for edge inference, real-time processing, and intelligent automation.



4 Power Over Ethernet Module

The PoE module simplifies your setup by eliminating the need for nearby power outlets, powering mini PCs and connecting them to the internet using a single Ethernet cable.

[Full Specifications](#)

More ▶

[Access](#)

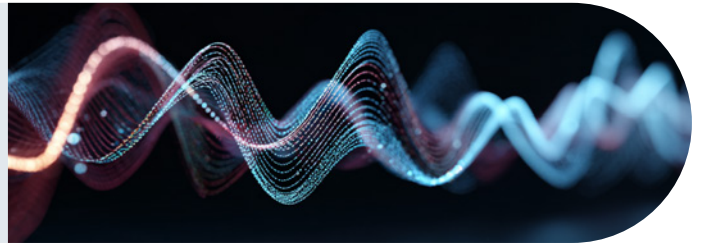
[Elite](#)

[Ally](#)

9 Modules

5 Sound Card

Independently control each audio output to deliver different streams to multiple zones simultaneously.



6 USB Expansion

Up to six USB ports – four USB 3.2 and two USB 2.0 – for simultaneous high-speed peripheral connectivity without compromise.

7 Serial Port

Add up to two RS-232 or RS-485 ports for direct integration with industrial devices, sensors, PLCs, and SCADA systems.



8 Active Cooling

Integrated fan extends the operating range to +60°C. Ensures stable, reliable performance in high-heat and always-on environments.

9 Storage Expansion (SATA SSD + NVMe SSD)

Expand storage via M.2 2280 M-Key slot. Choose SATA or NVMe to match your performance and budget requirements.



[Full Specifications](#)

[More ▶](#)

[Access](#)

[Elite](#)

[Ally](#)



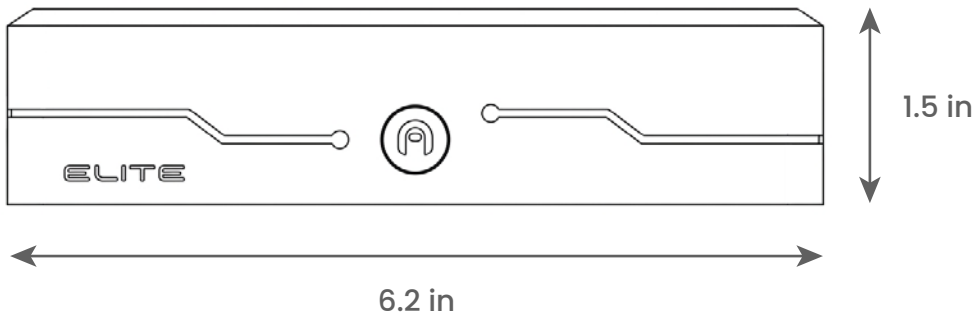
ELITE



ELITE

[Back to Contents](#)


High-Performance Mini PC for Multi-Display, Edge Computing, and Industrial Deployments



The most powerful device in the Azulle lineup. Intel Core Ultra 5 or Core Ultra 7 – built for deployments where N-series processors aren't enough. Four native HDMI 2.1 outputs, multi-Ethernet, modular casing options, and DDR5-5600 dual-channel memory. When the deployment demands processing power, multi-display output, or high-bandwidth edge computing, this is the product.

Where it's used:

- Video Walls And Multi-Display Command Environments
- High-Performance Edge Computing
- Industrial Control And Automation
- Trading Floor And Operations Center Workstations
- Deployments Requiring Simultaneous 4K Multi-Display Output



Cooling

Built-in active cooling system



Processor

Intel® Core Ultra™ 5 225H
Intel® Core Ultra™ 7 255H



Ultra-compact

6.2 x 5.0 x 1.5 in



Memory

DDR5-5600 dual channel support



Operating System

Windows 11 Pro®, Windows IoT®, Linux® Ubuntu®



Storage

Up to three M.2 expansion slots

[Full Specifications](#)
[More ▶](#)
[Byte](#)
[Access](#)
[Ally](#)

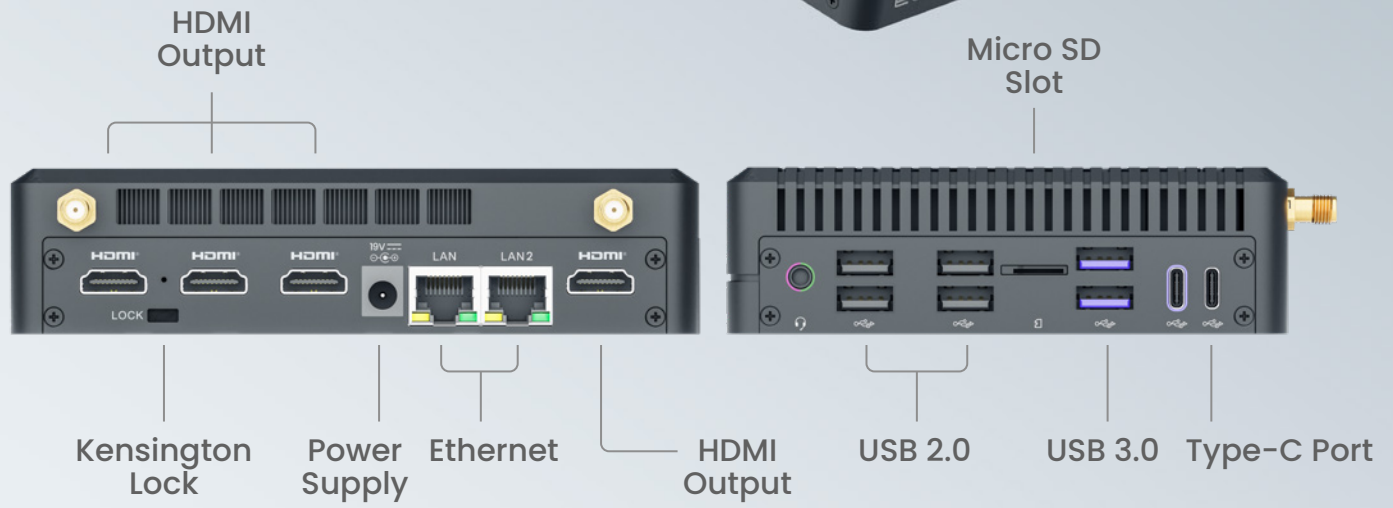
Casing / Ports & Features

[Back to Contents](#) 

Casing - Serial Module

Casing - Ethernet Module

Casing - Standard Module



[Full Specifications](#)

More ▶

[Byte](#)

[Access](#)

[Ally](#)



IVYU

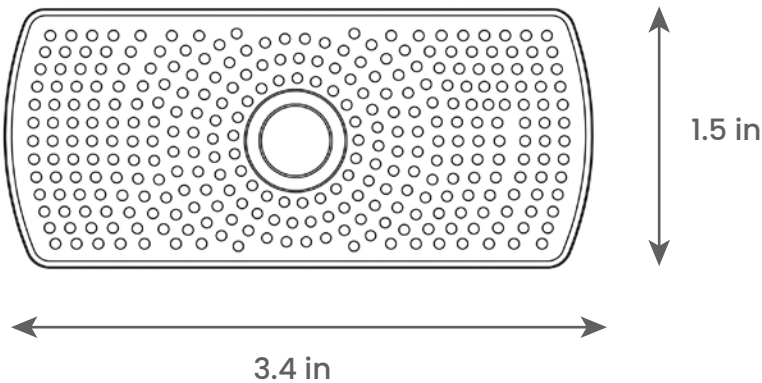


IVYU

[Back to Contents](#)



Precision imaging designed to integrate with AI infrastructures and software for comprehensive data collection and analysis.



With a wide field of view, IVYU can monitor multiple activities at once. Its discreet design fits naturally beside monitors and digital signs—ideal for environments from retail to public spaces.



Microphone

Dual digital built-in microphones



Connectivity

USB 2.0 Type-C



Ultra-compact

3.4 x 1.5 x 1.3 in



Lens

Adjustable 3MP wide lens
Dynamic Range 105dB
Horizontal FOV: 96HFOV



Operating System

Android®, Windows 10®,
Windows 11®, Linux® with UVC



Resolution

Full HD 1080p at 30FPS

[Full Specifications](#)

[More ▶](#)

[Access](#)

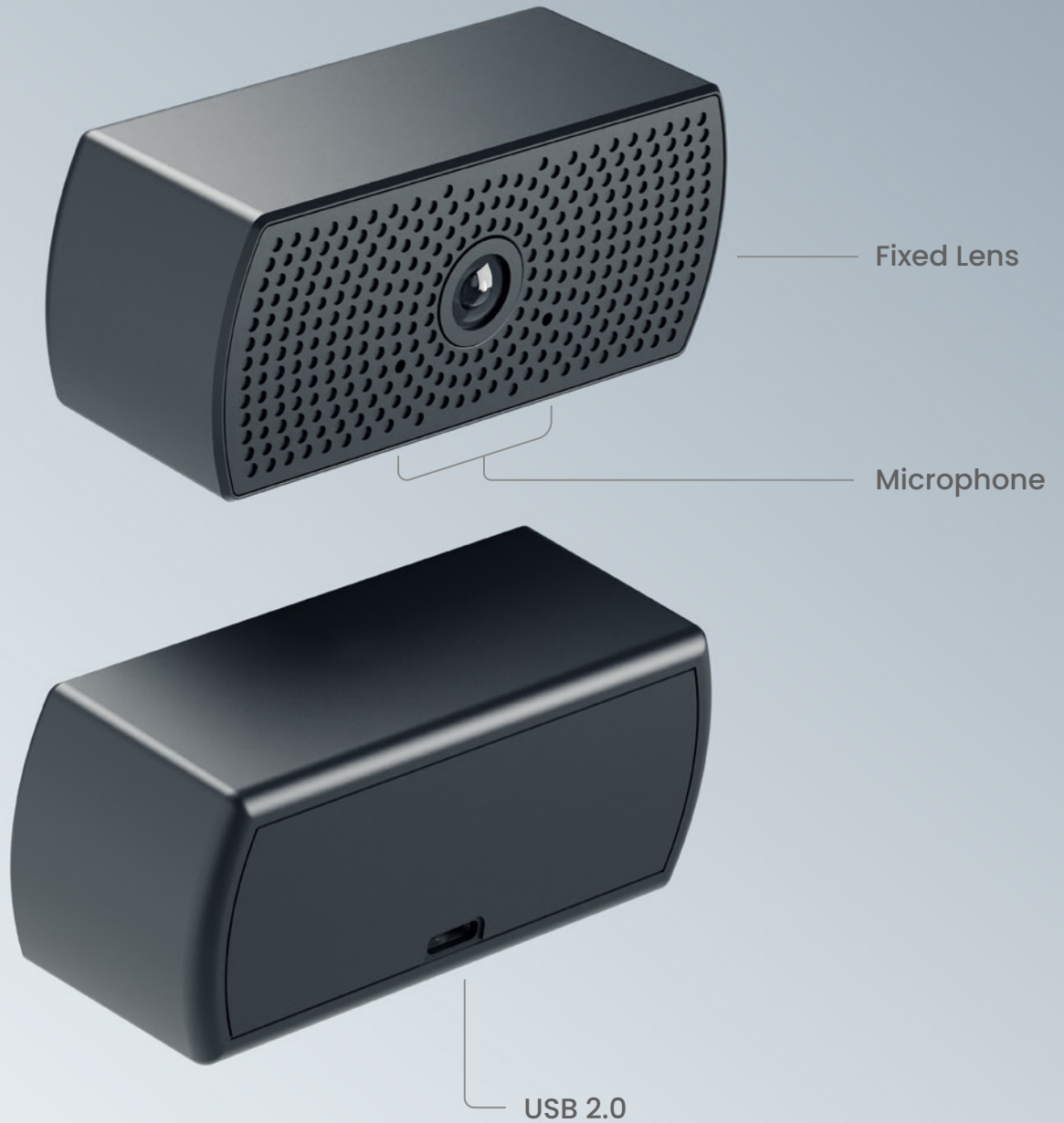
[Byte](#)

[Elite](#)

[Ally](#)

Ports & Features

[Back to Contents](#) 



[Full Specifications](#)

[More ▶](#)

[Access](#)

[Byte](#)

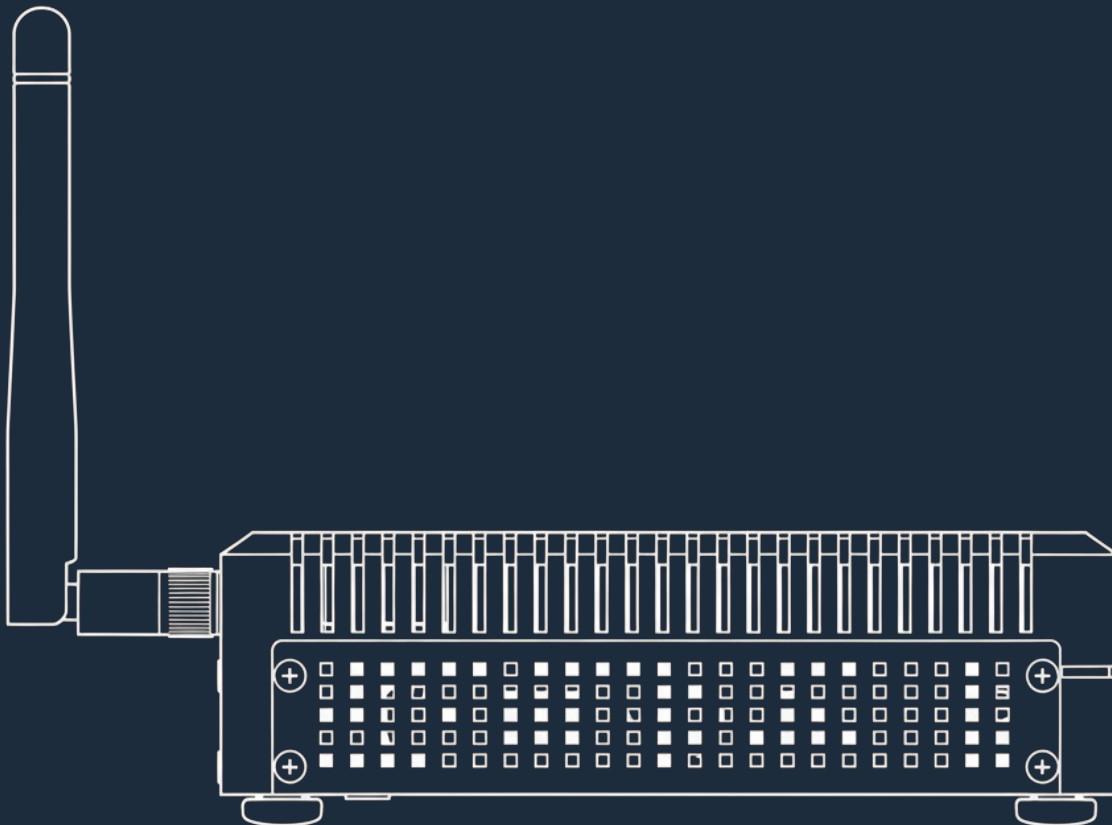
[Elite](#)

[Ally](#)

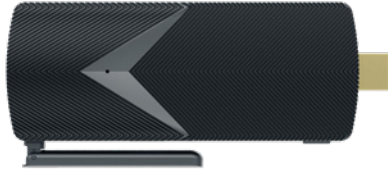


Full Specifications

Detailed specifications follow [▶](#)



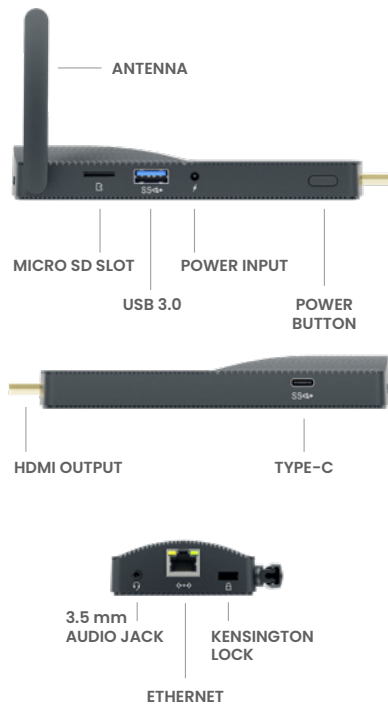
ACCESS PRO

[Back to Contents](#)

ADL 4/64GB

Fanless, plug-and-play mini PC stick for business and power users. Intel Alder Lake N-Series with 4GB/64GB, plus Wi-Fi 6, Bluetooth 5.2, USB-C, and HDMI 4K@60FPS. OS and software can be customized for your deployment.

PORTS AND FEATURES



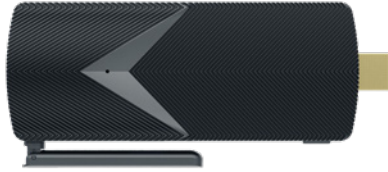
MOST POPULAR CASES

- 1 Kiosks
- 2 MSPs
- 3 Digital Signage
- 4 IoT
- 5 Remote Work

PRODUCT SPECIFICATIONS

RAM INSTALLED	Embedded 4GB LPDDR4
STORAGE	64GB eMMC
OPERATING SYSTEM	Windows 11 Pro®, Windows IoT®, Linux® Ubuntu®
WI-FI	AX201, Wi-Fi® 6 Dual Band (2.4Ghz/5.0Ghz)
GPU MODEL & MANUFACTURER	Intel® UHD Graphics
PROCESSOR, MODEL & MANUFACTURER	Intel® Alder Lake (N100)
PROCESSOR CORE COUNT	4
PROCESSOR CACHE	6 MB Intel® Smart Cache
ETHERNET	1 Gbps (x1)
BLUETOOTH	Intel® AX201, supports Bluetooth® 5.2.
WIRELESS LAN (TYPE)	Wi-Fi® 6
HDMI (NUMBER)	HDMI® 2.0 (x1)
HDMI OUTPUT	4K@60FPS
USB PORTS	USB 3.0 (x1)
TYPE-C PORT	USB 3.0 (x1)
MICRO SD CARD SLOT	(x1)
AUDIO OUTPUT	3.5 mm Audio Jack with L/R/MIC combo (x1)
POWER SUPPLY	12V/2A
WEIGHT	0.28 lbs
DIMENSIONS	5.1 x 2.0 x 0.8 in
WARRANTY	3 year manufacturer's warranty
KENSINGTON LOCK	K-Slot (x1)

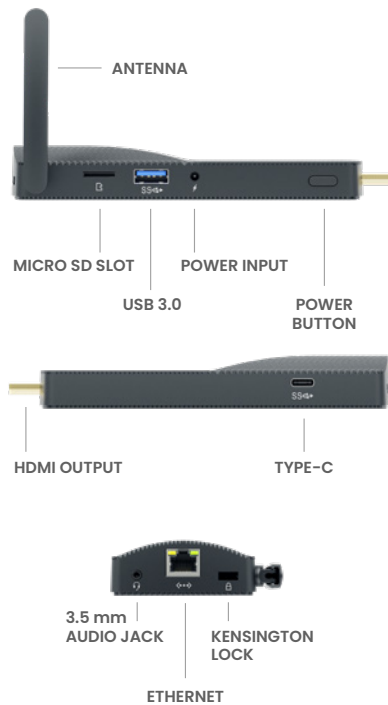
ACCESS PRO

[Back to Contents](#)

ADL 8/128GB

Fanless, plug-and-play mini PC stick for business and power users. Intel Alder Lake N-Series with 8GB/128GB, plus Wi-Fi 6, Bluetooth 5.2, USB-C, and HDMI 4K@60FPS. OS and software can be customized for your deployment.

PORTS AND FEATURES



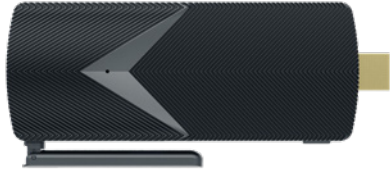
PRODUCT SPECIFICATIONS

RAM INSTALLED	Embedded 8GB LPDDR5
STORAGE	128GB eMMC
OPERATING SYSTEM	Windows 11 Pro®, Windows IoT®, Linux® Ubuntu®
WI-FI	AX201, Wi-Fi® 6 Dual Band (2.4Ghz/5.0Ghz)
GPU MODEL & MANUFACTURER	Intel® UHD Graphics
PROCESSOR, MODEL & MANUFACTURER	Intel® Alder Lake (N100)
PROCESSOR CORE COUNT	4
PROCESSOR CACHE	6 MB Intel® Smart Cache
ETHERNET	1 Gbps (x1)
BLUETOOTH	Intel® AX201, supports Bluetooth® 5.2.
WIRELESS LAN (TYPE)	Wi-Fi® 6
HDMI (NUMBER)	HDMI® 2.0 (x1)
HDMI OUTPUT	4K@60FPS
USB PORTS	USB 3.0 (x1)
TYPE-C PORT	USB 3.0 (x1)
MICRO SD CARD SLOT	(x1)
AUDIO OUTPUT	3.5 mm Audio Jack with L/R/MIC combo (x1)
POWER SUPPLY	12V/2A
WEIGHT	0.28 lbs
DIMENSIONS	5.1 x 2.0 x 0.8 in
WARRANTY	3 year manufacturer's warranty
KENSINGTON LOCK	K-Slot (x1)

MOST POPULAR CASES

- 1 Kiosks
- 2 MSPs
- 3 Digital Signage
- 4 IoT
- 5 Remote Work

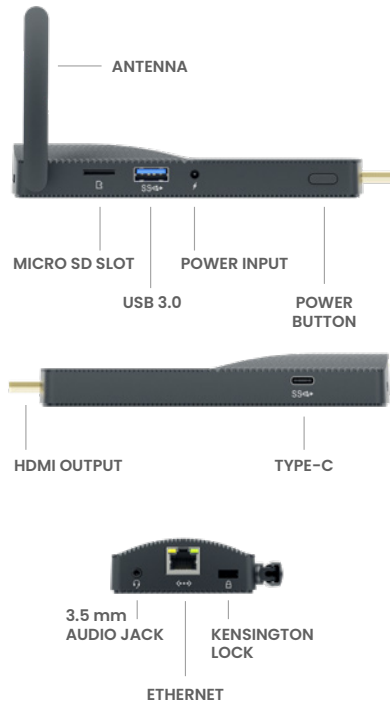
ACCESS PRO

[Back to Contents](#)

TWL 4/64GB

Compact, fanless mini PC for digital signage, IoT, kiosks, and edge computing. Intel latest N-Series for enhanced efficiency, improved processing power, and upgraded graphics—built for reliable performance in space-constrained commercial environments.

PORTS AND FEATURES



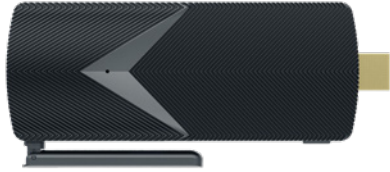
PRODUCT SPECIFICATIONS

RAM INSTALLED	Embedded 8GB; LPDDR5
STORAGE	128GB eMMC
OPERATING SYSTEM	Windows 11 Pro®, Windows IoT®, Linux® Ubuntu®
WI-FI	AX201, Wi-Fi® 6 Dual Band (2.4GHz/5.0GHz)
GPU MODEL & MANUFACTURER	Intel® UHD Graphics
PROCESSOR, MODEL & MANUFACTURER	Intel® Twin Lake (N150)
PROCESSOR CORE COUNT	4
PROCESSOR CACHE	6 MB Intel® Smart Cache
ETHERNET	1 Gbps (x1)
BLUETOOTH	Bluetooth® 5.0
WIRELESS LAN (TYPE)	Wi-Fi® 6
HDMI (NUMBER)	HDMI® 2.0 (x1)
HDMI OUTPUT	4K@60FPS
USB PORTS	USB 3.0 (x1)
TYPE-C PORT	USB 3.0 (x1)
MICRO SD CARD SLOT	(x1)
AUDIO OUTPUT	3.5 mm Audio Jack with L/R/MIC combo (x1)
POWER SUPPLY	12V/2A
WEIGHT	0.28 lbs
DIMENSIONS	5.1 x 2.0 x 0.8 in
WARRANTY	3 year manufacturer's warranty
KENSINGTON LOCK	K-Slot (x1)

MOST POPULAR CASES

- 1 Kiosks
- 2 MSPs
- 3 Digital Signage
- 4 IoT
- 5 Remote Work

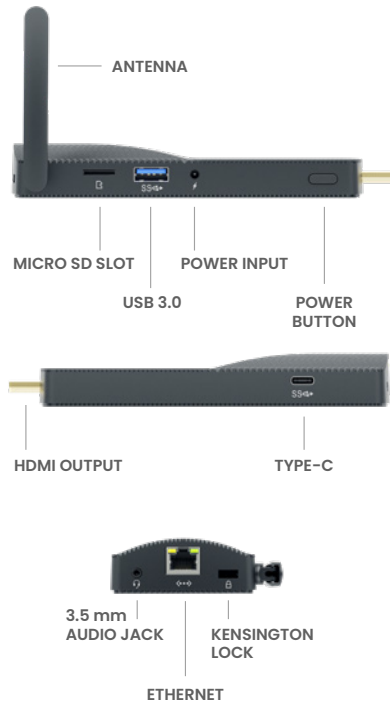
ACCESS PRO

[Back to Contents](#)

TWL 8/128GB

Compact, fanless mini PC for digital signage, IoT, kiosks, and edge computing. Intel latest N-Series with enhanced efficiency, improved processing power, and upgraded graphics – paired with 8GB/128GB for added capacity in commercial deployments.

PORTS AND FEATURES



PRODUCT SPECIFICATIONS

RAM INSTALLED	Embedded 8GB; LPDDR5
STORAGE	128GB eMMC
OPERATING SYSTEM	Windows 11 Pro®, Windows IoT®, Linux® Ubuntu®
WI-FI	AX201, Wi-Fi® 6 Dual Band (2.4GHz/5.0GHz)
GPU MODEL & MANUFACTURER	Intel® UHD Graphics
PROCESSOR, MODEL & MANUFACTURER	Intel® Twin Lake (N150)
PROCESSOR CORE COUNT	4
PROCESSOR CACHE	6 MB Intel® Smart Cache
ETHERNET	1 Gbps (x1)
BLUETOOTH	Bluetooth® 5.0
WIRELESS LAN (TYPE)	Wi-Fi® 6
HDMI (NUMBER)	HDMI® 2.0 (x1)
HDMI OUTPUT	4K@60FPS
USB PORTS	USB 3.0 (x1)
TYPE-C PORT	USB 3.0 (x1)
MICRO SD CARD SLOT	(x1)
AUDIO OUTPUT	3.5 mm Audio Jack with L/R/MIC combo (x1)
POWER SUPPLY	12V/2A
WEIGHT	0.28 lbs
DIMENSIONS	5.1 x 2.0 x 0.8 in
WARRANTY	3 year manufacturer's warranty
KENSINGTON LOCK	K-Slot (x1)

MOST POPULAR CASES

- 1 Kiosks
- 2 MSPs
- 3 Digital Signage
- 4 IoT
- 5 Remote Work

ACCESS ARM

[Back to Contents](#)

4/64GB

Commercial-grade mini PC stick for digital signage, kiosks, and edge computing, built to outperform consumer devices. Supports multiple displays from one compact device, runs Android and Linux, offers expandable memory, and a fanless design engineered for 24/7 reliability.

PORTS AND FEATURES



KEY FEATURES

- 1 Commercial-grade multi-display support (HDMI 2.1, 4K @ 120FPS)
- 2 Dual OS options - Android or Linux
- 3 Expandable storage - 64GB/128GB eMMC + microSD slot
- 4 Fanless, silent operation - Ideal for tight spaces and long runtimes
- 5 Plug-and-play deployment - With Wi-Fi 5, Bluetooth 5.0, Ethernet, USB 3.1
- 6 Optimized for scale - Compact and cost-effective for large rollouts

PRODUCT SPECIFICATIONS

RAM INSTALLED	Embedded 4GB; LPDDR4X
STORAGE	64GB eMMC
OPERATING SYSTEM	Android 14, Linux® Ubuntu®
WI-FI	Optional to upgrade to Wi-Fi®/6E
GPU MODEL & MANUFACTURER	ARM Mali G52 MC3
MAX TURBO FREQUENCY	3.40 GHz
PROCESSOR, MODEL & MANUFACTURER	Rockchip RK3576
PROCESSOR CORE COUNT	8
AI ACCELERATOR	6 TOPS @ INT8*
ETHERNET	1 Gbps (x1)
BLUETOOTH	Bluetooth® 5.0
WIRELESS LAN (TYPE)	Wi-Fi®5
HDMI(NUMBER)	HDMI® 2.1 (x1)
HDMIOUTPUT	4K @120FPS
USB PORTS	USB 3.1 (x1) USB 2.0 (x1)
MICRO SD CARD SLOT	(x1)
AUDIO OUTPUT	3.5 mm Audio Jack with L/R/MIC combo (x1)
POWER CONNECTOR	Type-C
POWER SUPPLY	12V/2A
WEIGHT	.28 lbs
DIMENSIONS	5.1 x 2.1 x 0.77 in
WARRANTY	3 year manufacturer's warranty
KENSINGTON LOCK	K-Slot (x1)
MINI DISPLAYPORT™	(x1)

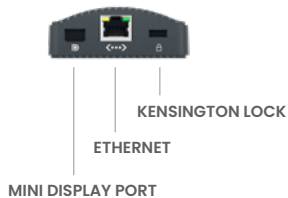
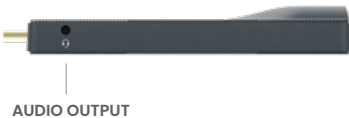
ACCESS ARM

[Back to Contents](#)

8/128GB

Commercial-grade mini PC stick for digital signage, kiosks, and edge computing, built to outperform consumer devices. Supports multiple displays from one compact device, runs Android and Linux, offers expandable memory, and a fanless, 24/7-ready design—now with 8GB/128GB.

PORTS AND FEATURES



KEY FEATURES

- 1 **Commercial-grade multi-display support** (HDMI 2.1, 4K @ 120FPS)
- 2 **Dual OS options** – Android or Linux
- 3 **Expandable storage** – 64GB/128GB eMMC + microSD slot
- 4 **Fanless, silent operation** – Ideal for tight spaces and long runtimes
- 5 **Plug-and-play deployment** – With Wi-Fi 5, Bluetooth 5.0, Ethernet, USB 3.1
- 6 **Optimized for scale** – Compact and cost-effective for large rollouts

PRODUCT SPECIFICATIONS

RAM INSTALLED	Embedded 8GB; LPDDR4X
STORAGE	128GB eMMC
OPERATING SYSTEM	Android 14, Linux® Ubuntu®
WI-FI	Optional to upgrade to Wi-Fi®/6E
GPU MODEL & MANUFACTURER	ARM Mali G52 MC3
MAX TURBO FREQUENCY	3.40 GHz
PROCESSOR, MODEL & MANUFACTURER	Rockchip RK3576
PROCESSOR CORE COUNT	8
AI ACCELERATOR	6 TOPS @ INT8*
ETHERNET	1 Gbps (x1)
BLUETOOTH	Bluetooth® 5.0
WIRELESS LAN (TYPE)	Wi-Fi®5
HDMI(NUMBER)	HDMI® 2.1 (x1)
HDMIOUTPUT	4K @120FPS
USB PORTS	USB 3.1 (x1) USB 2.0 (x1)
MICRO SD CARD SLOT	(x1)
AUDIO OUTPUT	3.5 mm Audio Jack with L/R/MIC combo (x1)
POWER CONNECTOR	Type-C
POWER SUPPLY	12V/2A
WEIGHT	0.28 lbs
DIMENSIONS	5.1 x 2.1 x 0.77 in
WARRANTY	3 year manufacturer's warranty
KENSINGTON LOCK	K-Slot (x1)
MINI DISPLAYPORT™	(x1)

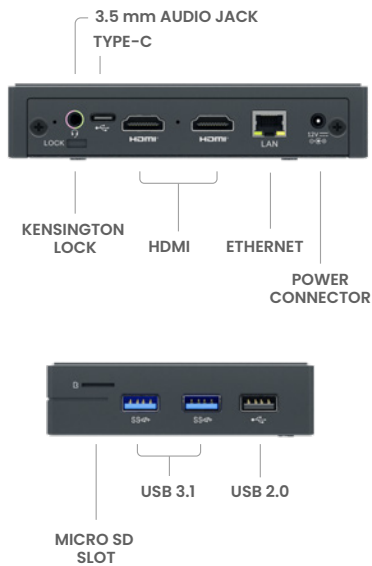
ALLY

[Back to Contents](#)

N150

Reliable, energy-efficient mini PC for continuous 24/7 operation. Intel® Processor N150, fanless design for quiet, stable uptime with reduced dust buildup. Supports dual displays, multiple I/O ports, and expandable storage options for commercial and industrial applications.

PORTS AND FEATURES



KEY FEATURES

- Powered by Intel Twin Lake processor** - Delivers strong performance for business and enterprise applications
- Fanless, compact design** - Silent operation with reduced maintenance requirements
- Dual display support** - Connects to two monitors for enhanced multitasking and productivity
- Versatile connectivity** - Features USB, HDMI, and Ethernet for seamless integration
- Expandable storage** - Supports SSDs and microSD cards for additional storage
- Energy-efficient** - Designed for low power consumption in high-demand environments
- Commercial-grade components** - Built for 24/7 operation in demanding environments

PRODUCT SPECIFICATIONS

RAM INSTALLED	SO-DIMM 8GB; DDR5-SLOT (x1)
STORAGE	64GB eMMC
SSD SUPPORT	M.2 M-KEY 2280 slot, NVMe or SATA3, up to 8TB
OPERATING SYSTEM	Windows 11 Pro®, Windows IoT®, Linux® Ubuntu®
WI-FI	AC9560 Wi-Fi®5 (M.2-1216) ONBOARD, external antenna
GPU MODEL & MANUFACTURER	Intel® UHD Graphics
PROCESSOR, MODEL & MANUFACTURER	Intel® Twin Lake (N150)
PROCESSOR CORE COUNT	4
PROCESSOR CACHE	6 MB Intel® Smart Cache
ETHERNET	1 Gbps (x2)
BLUETOOTH	Intel®AC9560, supports Bluetooth® 5.1
WIRELESS LAN (TYPE)	Wi-Fi®5
HDMI®(NUMBER)	HDMI® 2.1 (x2)
HDMI®OUTPUT	4K @60FPS
USB PORTS	USB 3.1-GEN2, 10Gbps (x2) USB 2.0 (x1)
TYPE-C PORT	USB 2.0 (x1)
KENSINGTON LOCK	K-Slot (x1)
MICRO SD CARD SLOT	(x1)
AUDIO OUTPUT	3.5 mm Audio Jack with L/R/MIC combo (x1)
POWER CONNECTOR	Locking Power Jack
POWER SUPPLY	12V/2A
WEIGHT	0.66 lbs
DIMENSIONS	5 x 3.9 x 1.2 in
WARRANTY	3 year manufacturer's warranty

ALLY PRO ARM

[Back to Contents](#)



4/64GB

Purpose-built, scalable digital signage mini PC on an ARM platform with Android and Linux Ubuntu support. Minimal I/O - one HDMI and one Ethernet - in a compact, fanless body engineered for 24/7 performance.

PORTS AND FEATURES



TYPE-C PORT
3.5 mm AUDIO JACK



RS-232
HDMI
ETHERNET
POWER INPUT



USB 3.0
USB 2.0
MICRO SD SLOT
KENSINGTON LOCK

KEY FEATURES

- 1 Powered by full Android OS (Linux option available)
- 2 Efficient ARM-based CPU for low power consumption
- 3 Fanless design for silent, 24/7 operation
- 4 Single HDMI port for streamlined display output
- 5 One Ethernet port for reliable wired connectivity
- 6 Commercial-grade components built for enterprise use
- 7 7 Pre-imaging and white-label customization available
- 8 8 Plug-and-play deployment for fast installations

PRODUCT SPECIFICATIONS

RAM INSTALLED	Embedded 4GB; LPDDR4X
STORAGE	64GB eMMC
OPERATING SYSTEM	Android 14, Linux® Ubuntu® 22.04
WI-FI	Wi-Fi® 5 802.11AC
GPU MODEL & MANUFACTURER	ARM Mali G52 MC3
MAX TURBO FREQUENCY	3.40 GHz
PROCESSOR, MODEL & MANUFACTURER	Rockchip RK3576
PROCESSOR CORE COUNT	4
AI ACCELERATOR	6 TOPS @ INT8*
ETHERNET	1 Gbps (x1)
BLUETOOTH	Bluetooth 5.0
WIRELESS LAN (TYPE)	Wi-Fi® 5
HDMI(NUMBER)	HDMI® (x1)
HDMIOUTPUT	4K @120FPS
USB PORTS	USB 3.0, Max 5Gbps (x1)
	USB 2.0 (x3)
TYPE-C PORT	USB 2.0 (x1)
SERIAL PORTS	RS-232 (x1)
MICRO SD CARD SLOT	(x1)
AUDIO OUTPUT	3.5 mm Audio Jack with L/R/MIC combo (x1)
POWER CONNECTOR	Barrel Plug
POWER SUPPLY	12V/2A
WEIGHT	0.66 lbs
DIMENSIONS	5 x 3.9 x 1.2in
WARRANTY	3 year manufacturer's warranty
KENSINGTON LOCK	K-Slot (x1)

ALLY PRO ARM

[Back to Contents](#)



8/128GB

Purpose-built, scalable digital signage mini PC on an ARM platform with Android and Linux Ubuntu support. Minimal I/O—one HDMI and one Ethernet—in a compact, fanless body engineered for 24/7 performance, now with 8GB/128GB.

PORTS AND FEATURES



TYPE-C PORT
3.5 mm AUDIO JACK



SERIAL PORT
HDMI
ETHERNET
POWER INPUT



USB 3.0
USB 2.0
MICRO SD SLOT
KENSINGTON LOCK

KEY FEATURES

- 1 Powered by full Android OS (Linux option available)
- 2 Efficient ARM-based CPU for low power consumption
- 3 Fanless design for silent, 24/7 operation
- 4 Single HDMI port for streamlined display output
- 5 One Ethernet port for reliable wired connectivity
- 6 Commercial-grade components built for enterprise use
- 7 Pre-imaging and white-label customization available
- 8 Plug-and-play deployment for fast installations

PRODUCT SPECIFICATIONS

RAM INSTALLED	Embedded 8GB; LPDDR4X
STORAGE	128GB eMMC
OPERATING SYSTEM	Android 14, Linux® Ubuntu® 22.04
WI-FI	Wi-Fi® 5 802.11AC
GPU MODEL & MANUFACTURER	ARM Mali G52 MC3
MAX TURBO FREQUENCY	3.40 GHz
PROCESSOR, MODEL & MANUFACTURER	Rockchip RK3576
PROCESSOR CORE COUNT	4
AI ACCELERATOR	6 TOPS @ INT8*
ETHERNET	1 Gbps (x1)
BLUETOOTH	Bluetooth 5.0
WIRELESS LAN (TYPE)	Wi-Fi® 5
HDMI(NUMBER)	HDMI® (x1)
HDMIOUTPUT	4K @120FPS
USB PORTS	USB 3.0, Max 5Gbps (x1)
	USB 2.0 (x3)
TYPE-C PORT	USB 2.0 (x1)
SERIAL PORTS	RS-232 (x1)
MICRO SD CARD SLOT	(x1)
AUDIO OUTPUT	3.5 mm Audio Jack with L/R/MIC combo (x1)
POWER CONNECTOR	Barrel Plug
POWER SUPPLY	12V/2A
WEIGHT	0.66 lbs
DIMENSIONS	5 x 3.9 x 1.2in
WARRANTY	3 year manufacturer's warranty
KENSINGTON LOCK	K-Slot (x1)

ALLY PRO TWL

[Back to Contents](#)


Compact, fanless mini PC for solution providers. Latest Intel Twin Lake N-series, with business-ready I/O: dual HDMI, custom RS-232, USB-C, and dual Ethernet for deployments across digital signage, IT infrastructure, and automation.

PORTS AND FEATURES



TYPE-C PORT
3.5 mm
AUDIO JACK



RS-232
HDMI 2.1
ETHERNET
LOCKING
POWER JACK



MICRO SD SLOT
KENSINGTON LOCK
USB 3.0
USB 2.0

MOST POPULAR CASES

- 1 Kiosks
- 2 MSPs
- 3 Digital Signage
- 4 IoT

PRODUCT SPECIFICATIONS

RAM INSTALLED	Embedded 8GB; DDR5-SLOT (x1)
STORAGE	128GB eMMC
SSD SUPPORT	M.2 M-KEY 2280 slot, NVMe® or SATA3, up to 8TB
OPERATING SYSTEM	Windows 11 Pro®, Windows IoT®, Linux® Ubuntu®
WI-FI	AC9560 Wi-Fi®5 (M.2-1216) ONBOARD, external antenna
GPU MODEL & MANUFACTURER	Intel® UHD Graphics
PROCESSOR, MODEL & MANUFACTURE	Intel® Twin Lake (N150)
PROCESSOR CORE COUNT	4
PROCESSOR CACHE	6 MB Intel® Smart Cache
ETHERNET	1 Gbps (x2)
BLUETOOTH	Intel® AC9560, supports Bluetooth® 5.1.
WIRELESS LAN (TYPE)	Wi-Fi® 5
HDMI (NUMBER)	HDMI® 2.1 (x2)
HDMI OUTPUT	4K @60FPS
USB PORTS	USB 3.1-GEN2, 10Gbps (x2) USB 2.0 (x2)
TYPE-C PORT	USB 2.0 (x1)
SERIAL PORTS	Optional RS-232 (x1)
MICRO SD CARD SLOT	(x1)
AUDIO OUTPUT	3.5 mm Audio Jack with L/R/MIC combo (x1)
POWER CONNECTOR	Locking Power Jack
POWER SUPPLY	12V/2A
WEIGHT	0.66 lbs
DIMENSIONS	5 x 3.9 x 1.2 in
WARRANTY	3 year manufacturer's warranty
KENSINGTON LOCK	K-Slot (x1)



[Back to Contents](#)



Twin Lake

Ultra-compact, factory-configurable modular mini PC for B2B deployments. Intel® Processor N150 (Twin Lake), dual 2.5Gbps Ethernet, and up to three 4K@60FPS displays for 24/7 signage, kiosks, IoT/edge. Factory-integrated expansion options: PoE, 4G, RF, AI accelerator, SATA SSD, NVMe SSD, serial expansion, active cooling, two additional USB ports, sound card ships install-ready with no on-site hardware changes.

PORTS AND FEATURES



KEY FEATURES

- 1 **Factory-configurable modular platform** - Ultra-compact base unit, configured at production with optional PoE, 4G, RF, AI accelerator, SATA SSD, NVMe SSD, serial expansion, active cooling, USB 2.0 (2x), and sound card modules.
- 2 **Intel® Processor N150 (Twin Lake)** - Efficient, modern CPU for single-purpose, always-on edge workloads.
- 3 **Edge-ready I/O & visuals** - Dual 2.5Gbps Ethernet and support for up to three 4K@60FPS displays for signage, kiosks, and control interfaces.
- 4 **Ready-to-deploy batches** - Units ship pre-assembled and configured for your application to reduce on-site installation work.
- 5 **Streamlined fleet management** - Standardized platform simplifies inventory, imaging, and long-term maintenance.

PRODUCT SPECIFICATIONS

MEMORY TYPE	Supports up to DDR5-4800 (1 slot)
RAM INSTALLED	Supports SO-DIMM DDR5-4800, up to 32 GB
STORAGE TYPE	eMMC and SSD
STORAGE CAPACITY	eMMC: 64 GB or 128 GB, Upgradeable to 256 GB SSD: Optional, Upgradeable to 960 GB
SSD SUPPORT	Optional, M.2 2280 M-KEY slot (x1): NVMe® PCIe 4.0 x4 / SATA, up to 960 GB
OPERATING SYSTEM	Windows 11 Pro®, Windows IoT®, Linux® Ubuntu®
WI-FI	AX201, Wi-Fi® 6
GPU MODEL & MANUFACTURER	Intel® Graphics
MAX TURBO FREQUENCY	3.6 GHz
PROCESSOR, MODEL & MANUFACTURE	Intel® Twin Lake N150
PROCESSOR CORE COUNT	4
PROCESSOR CACHE	6 MB Intel® Smart Cache
ETHERNET	2.5 Gbps ports (x2) One port can be configured as PoE + (Optional)
BLUETOOTH	AX201, supports Bluetooth® 5.2
WIRELESS LAN (TYPE)	Wi-Fi® 6
HDMI(VERSION)	HDMI® 2.1 (x3)
HDMI OUTPUT	4K@60FPS (x3)
USB PORTS	USB 3.2 (x4) USB 2.0 (x2)
TYPE-C PORT	USB 2.0 (x1)
SERIAL PORTS	Optional, up to x2 total (RS-232/RS-485)
MICRO SD CARD SLOT	(x1)
AUDIO OUTPUT	3.5 mm Audio Jack with L/R/MIC combo (x1)
ACTIVE COOLING	Optional
POWER CONNECTOR	Locking Barrel Plug 12V/2A standard power supply
POWER SUPPLY	When AI module is selected upgrade to 12V/4A
WEIGHT	2.20 lbs
DIMENSIONS	6.6 x 4.5 x 1.5 in
WARRANTY	3 year manufacturer's warranty
AI ACCELERATOR SUPPORT	Optional - M.2 2280 M-KEY PCIe 4.0 x4
ADDITIONAL MODULES SUPPORTED	4G and RF module supported on 2242 B-KEY M.2 slot (x1)
KENSINGTON LOCK	K-Slot (x1)

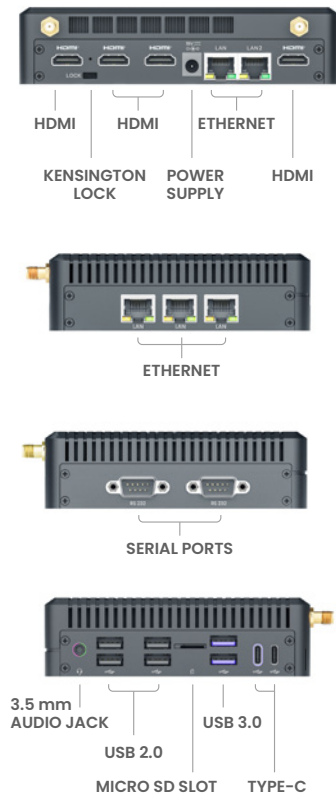
ELITE

[Back to Contents](#)

Arrow Lake i5

Azulle's most powerful mini PC: a compact desktop replacement for demanding corporate and edge workloads. Intel® Core™ Ultra (Arrow Lake), four native HDMI 2.1 ports, and support for intensive multitasking, multi-screen 8K video, and data-heavy applications. Modular I/O supports up to five Ethernet or two serial ports, plus optional AI chip support.

PORTS AND FEATURES



KEY FEATURES

- 1 Top-tier performance mini PC
- 2 4x HDMI 2.1 (up to four 4K displays / multi-stream 8K)
- 3 Modular I/O: up to 5x Ethernet or 2x serial, optional AI chip
- 4 Compact footprint for lower TCO (simplified deployments, longer lifecycle, reduced power)

PRODUCT SPECIFICATIONS

MEMORY TYPE	Supports up to DDR5-5600 Dual Channel (2 slots)
RAM INSTALLED	Supports SO-DIMM DDR5-5600, up to 96 GB
STORAGE TYPE	SSD
STORAGE CAPACITY	Upgradeable to 960 GB
SSD SUPPORT	M.2 2280 M-KEY slots (x2): NVMe® PCIe 4.0 x4 / SATA, up to 960 GB each M.2 2242 B-KEY slot (x1): SATA, up to 960 GB or 4G/LTE module
OPERATING SYSTEM	Windows 11 Pro®, Windows IoT®, Linux® Ubuntu®
WI-FI	AX201, Wi-Fi® 6
GPU MODEL & MANUFACTURER	Intel® Arc® Graphics 130T
MAX TURBO FREQUENCY	4.9 GHz
PROCESSOR, MODEL & MANUFACTURE	Intel® Core Ultra™ 5 225H
PROCESSOR CORE COUNT	14
PROCESSOR CACHE	18 MB Intel® Smart Cache
ETHERNET	2.5Gbps (x2) Optional 3 additional Ethernet ports, up to 5 total
BLUETOOTH	AX201, supports Bluetooth® 5.2
WIRELESS LAN (TYPE)	Wi-Fi® 6
HDMI (VERSION)	HDMI® 2.1 (x4)
HDMI OUTPUT	Supports up to 8K@60Hz on a single display or up to four 4K@60Hz displays
USB PORTS	USB 3.2 (x2) USB 2.0 (x4)
TYPE-C PORT	USB 4.0 (x1), supports DisplayPort® Alt mode 8K@30FPS USB 2.0 (x1)
SERIAL PORTS	Optional, up to x2 total (RS-232/RS-485)
MICRO SD CARD SLOT	(x1)
AUDIO OUTPUT	3.5 mm Audio Jack with L/R/MIC combo (x1)
ACTIVE COOLING	Yes
POWER CONNECTOR	Locking Barrel Plug
POWER SUPPLY	19V/6.3A
WEIGHT	1.24 lbs
DIMENSIONS	6.2 x 5.0 x 1.5 in
WARRANTY	3 year manufacturer's warranty
KENSINGTON LOCK	K-Slot (x1)

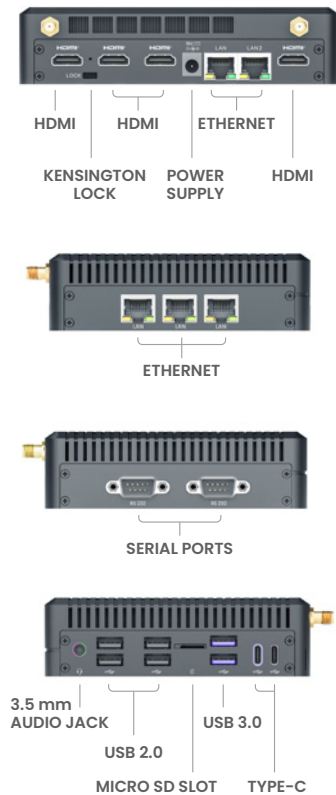
ELITE

[Back to Contents](#)

Arrow Lake i7

Azulle's most powerful mini PC: a compact desktop replacement for demanding corporate and edge workloads. Intel® Core™ Ultra (Arrow Lake), four native HDMI 2.1 ports, and support for intensive multitasking, multi-screen 8K video, and data-heavy applications. Modular I/O supports up to five Ethernet or two serial ports, plus optional AI chip support.

PORTS AND FEATURES



KEY FEATURES

- 1 Top-tier performance mini PC
- 2 4x HDMI 2.1 (up to four 4K displays / multi-stream 8K)
- 3 Modular I/O: up to 5x Ethernet or 2x serial, optional AI chip
- 4 Compact footprint for lower TCO (simplified deployments, longer lifecycle, reduced power)

PRODUCT SPECIFICATIONS

MEMORY TYPE	Supports up to DDR5-6400 Dual Channel (2 slots)
RAM INSTALLED	Supports SO-DIMM DDR5-6400, up to 96 GB
STORAGE TYPE	SSD
STORAGE CAPACITY	Upgradeable to 960 GB
SSD SUPPORT	M.2 2280 M-KEY slots (x2): NVMe® PCIe 4.0 x4 / SATA, up to 960 GB each M.2 2242 B-KEY slot (x1): SATA, up to 960 GB or 4G/LTE module
OPERATING SYSTEM	Windows 11 Pro®, Windows IoT®, Linux® Ubuntu®
WI-FI	AX201, Wi-Fi® 6
GPU MODEL & MANUFACTURER	Intel® Arc® Graphics 140T
MAX TURBO FREQUENCY	5.1 GHz
PROCESSOR, MODEL & MANUFACTURE	Intel® Core Ultra™ 7 255H
PROCESSOR CORE COUNT	16
PROCESSOR CACHE	24 MB Intel® Smart Cache
ETHERNET	2.5Gbps (x2) Optional 3 additional Ethernet ports, up to 5 total
BLUETOOTH	AX201, supports Bluetooth® 5.2
WIRELESS LAN (TYPE)	Wi-Fi® 6
HDMI (VERSION)	HDMI® 2.1 (x4)
HDMI OUTPUT	Supports up to 8K@60Hz on a single display or up to four 4K@60Hz displays
USB PORTS	USB 3.2 (x2) USB 2.0 (x4)
TYPE-C PORT	USB 4.0 (x1), supports DisplayPort® Alt mode 8K@30FPS USB 2.0 (x1)
SERIAL PORTS	Optional, up to x2 total (RS-232/RS-485)
MICRO SD CARD SLOT	(x1)
AUDIO OUTPUT	3.5 mm Audio Jack with L/R/MIC combo (x1)
ACTIVE COOLING	Yes
POWER CONNECTOR	Locking Barrel Plug
POWER SUPPLY	19V/6.3A
WEIGHT	1.24 lbs
DIMENSIONS	6.2 x 5.0 x 1.5 in
WARRANTY	3 year manufacturer's warranty
KENSINGTON LOCK	K-Slot (x1)

ELITE

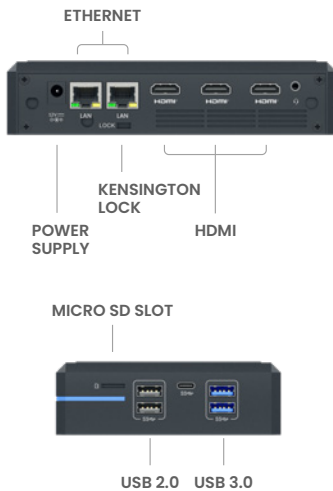
[Back to Contents](#)



Raptor Lake i3

The Elite is Azulle's ultra-powerful barebones mini PC with an i3 Intel 13th Gen Raptor Lake processor, operating system, storage, and RAM, to run business-related applications. Ideal for companies looking for reliable and high-quality hardware for industrial use cases including lot, thin client replacements, POS systems, edge computing, emergency notification systems, and beyond.

PORTS AND FEATURES



MOST POPULAR CASES

- 1 Desktop
- 2 Thin Clients
- 3 Digital Signage
- 4 IoT

PRODUCT SPECIFICATIONS

MEMORY TYPE	Supports up to DDR4-3200 Dual Channel (2 slots)
RAM INSTALLED	Barebones
RAM CAPACITY	Upgradeable to 64GB
STORAGE TYPE	Barebones
STORAGE CAPACITY	Upgradeable to 960GB
SSD SUPPORT	M.2 M-KEY 2280 slot, NVMe® or SATA3, up to 8TB
OPERATING SYSTEM	Windows 11 Pro®, Windows IoT®, Linux® Ubuntu®
WI-FI	AX201, Wi-Fi®6 / N/A
GPU MODEL & MANUFACTURER	Intel® UHD Graphics
MAX TURBO FREQUENCY	4.5 GHz
PROCESSOR, MODEL & MANUFACTURER	Intel® Raptor Lake i3 1315U
PROCESSOR CORE COUNT	6
PROCESSOR CACHE	10 MB Intel® Smart Cache
ETHERNET	1 Gbps (x1), 2.5 Gbps (x1)
BLUETOOTH	AX201, supports Bluetooth® 5.1 / N/A
WIRELESS LAN (TYPE)	Wi-Fi® 6
HDMI (VERSION)	HDMI® 2.1 (x3)
HDMI OUTPUT	8K@30FPS (x2) / 4K@60FPS (x1)
USB PORTS	USB 3.1 (x4)
TYPE-C PORT	USB 4.0 (x1), supports DisplayPort® Alt mode 8K@30FPS
SERIAL PORTS	N/A
MICRO SD CARD SLOT	(x1)
AUDIO OUTPUT	3.5 mm audio jack with L/R/MIC combo (x1)
ACTIVE COOLING	Yes
POWER CONNECTOR	Locking Barrel Plug
POWER SUPPLY	19V/4A
WEIGHT	1.19 lbs
DIMENSIONS	6.6 x 4.5 x 1.5 in
WARRANTY	3 year manufacturer's warranty
KENSINGTON LOCK	K-Slot (x1)

ELITE

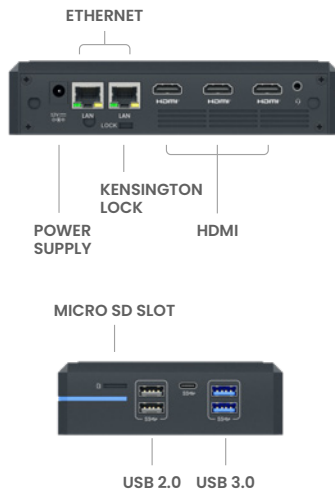
[Back to Contents](#)



Raptor Lake i5

The Elite is Azulle's ultra-powerful barebones mini PC with an i5 Intel 13th Gen Raptor Lake processor, operating system, storage, and RAM, to run business-related applications. Ideal for companies looking for reliable and high-quality hardware for industrial use cases including lot, thin client replacements, POS systems, edge computing, emergency notification systems, and beyond.

PORTS AND FEATURES



MOST POPULAR CASES

- 1 Desktop
- 2 Thin Clients
- 3 Digital Signage
- 4 IoT

PRODUCT SPECIFICATIONS

MEMORY TYPE	Supports up to DDR4-3200 Dual Channel (2 slots)
RAM INSTALLED	Barebones
RAM CAPACITY	Upgradeable to 64GB
STORAGE TYPE	Barebones
STORAGE CAPACITY	Upgradeable to 960GB
SSD SUPPORT	M.2 M-KEY 2280 slot, NVMe® or SATA3, up to 8TB
OPERATING SYSTEM	Windows 11 Pro®, Windows IoT®, Linux® Ubuntu®
WI-FI	AX201, Wi-Fi®6 / No optional upgrades available.
GPU MODEL & MANUFACTURER	Intel® Iris® Xe Graphics
MAX TURBO FREQUENCY	4.6 GHz
PROCESSOR, MODEL & MANUFACTURER	Intel® Raptor Lake i5 1340P
PROCESSOR CORE COUNT	12
PROCESSOR CACHE	12 MB Intel® Smart Cache
ETHERNET	1 Gbps (x1), 2.5 Gbps (x1)
BLUETOOTH	AX201, supports Bluetooth® 5.1
WIRELESS LAN (TYPE)	Wi-Fi® 6
HDMI (VERSION)	HDMI® 2.1 (x3)
HDMI OUTPUT	8K@30FPS (x2) / 4K@60FPS (x1)
USB PORTS	USB 3.1 (x4)
TYPE-C PORT	USB 4.0 (x1), supports DisplayPort® Alt mode 8K@30FPS
SERIAL PORTS	Not available
MICRO SD CARD SLOT	(x1)
AUDIO OUTPUT	3.5 mm audio jack with L/R/MIC combo (x1)
ACTIVE COOLING	Yes
POWER CONNECTOR	Locking Barrel Plug
POWER SUPPLY	19V/4A
WEIGHT	1.19 lbs
DIMENSIONS	6.6 x 4.5 x 1.5 in
WARRANTY	3 year manufacturer's warranty
KENSINGTON LOCK	K-Slot (x1)

ELITE

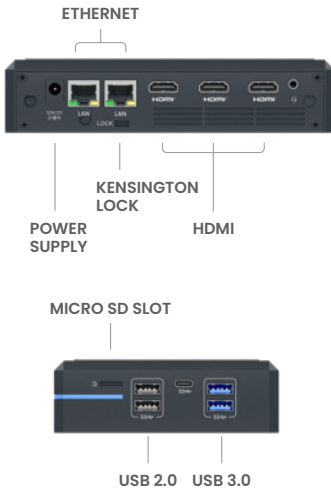
[Back to Contents](#)



Raptor Lake i7

The Elite is Azulle's ultra-powerful barebones mini PC with an i7 Intel 13th Gen Raptor Lake processor, operating system, storage, and RAM, to run business-related applications. Ideal for companies looking for reliable and high-quality hardware for industrial use cases including lot, thin client replacements, POS systems, edge computing, emergency notification systems, and beyond.

PORTS AND FEATURES



MOST POPULAR CASES

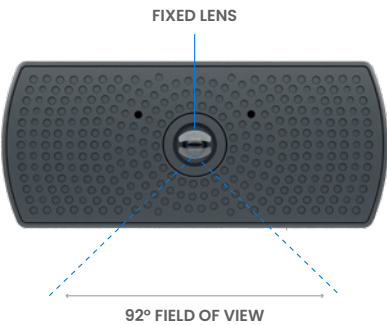
- 1 Desktop
- 2 Thin Clients
- 3 Digital Signage
- 4 IoT

PRODUCT SPECIFICATIONS

MEMORY TYPE	Supports up to DDR4-3200 Dual Channel (2 slots)
RAM INSTALLED	Barebones
RAM CAPACITY	Upgradeable to 64GB
STORAGE TYPE	Barebones
STORAGE CAPACITY	Upgradeable to 960GB
SSD SUPPORT	M.2 M-KEY 2280 slot, NVMe® or SATA3, up to 8TB
OPERATING SYSTEM	Windows 11 Pro®, Windows IoT®, Linux® Ubuntu®
WI-FI	AX201, Wi-Fi®6 / No optional upgrades available.
GPU MODEL & MANUFACTURER	Intel® Iris® Xe Graphics
MAX TURBO FREQUENCY	5.0 GHz
PROCESSOR, MODEL & MANUFACTURER	Intel® Raptor Lake i7 1360P
PROCESSOR CORE COUNT	12
PROCESSOR CACHE	18 MB Intel® Smart Cache
ETHERNET	1 Gbps (x1), 2.5 Gbps (x1)
BLUETOOTH	AX201, supports Bluetooth® 5.1
WIRELESS LAN (TYPE)	Wi-Fi® 6
HDMI (NUMBER)	HDMI® 2.1 (x3)
HDMI OUTPUT	8K@30FPS (x2) / 4K@60FPS (x1)
USB PORTS	USB 3.1 (x4)
TYPE-C PORT	USB 4.0 (x1), supports DisplayPort® Alt mode 8K@30FPS
SERIAL PORTS	Not available
MICRO SD CARD SLOT	(x1)
AUDIO OUTPUT	3.5 mm audio jack with L/R/MIC combo (x1)
POWER CONNECTOR	Locking Barrel Plug
POWER SUPPLY	19V/4A
WEIGHT	1.19 lbs
DIMENSIONS	6.6 x 4.5 x 1.5 in
WARRANTY	3 year manufacturer's warranty
KENSINGTON LOCK	K-Slot (x1)
ACTIVE COOLING	Yes



PORTS AND FEATURES



KEY FEATURES

- Dynamic Capture**
Optimized for personalized advertising.
- Virtual Environment Capture**
Delivers realistic user experiences in diverse lighting.
- Facial & Product Recognition**
Enhanced performance in challenging lighting conditions.

Precision imaging for intelligent insights

Azulle's iVyu AI camera is designed to integrate seamlessly with AI infrastructures and software for comprehensive data collection and analysis. This compact camera features a fixed lens with 1920 (H) x 1080 (V) resolution and delivers clear close-up and long-distance views across varying lighting conditions. With a wide 92° field of view, it can monitor multiple activities at once. Its discreet, unobtrusive design fits naturally beside monitors and digital signs - ideal for environments from retail to public spaces.

PRODUCT SPECIFICATIONS

LENS PARAMETER	1/2.7" 3MP Adjustable Lens, HFOV 95 Degrees D110° x H95° x V69° ± 5°
MAX RESOLUTION	1920(H) x 1080(V)
COMPRESSION FORMAT	MJPEG, YUY2
RESOLUTION FRAME	1920 x 1080@30FPS 1280 x 1024@30FPS 1280 x 960@30FPS 1280 x 720@30FPS 1024 x 768@30FPS 800 x 600@30FPS 640 x 480@30FPS 320 x 240@30FPS
DYNAMIC RANGE	105 dB
HORIZONTAL FOV	HFOV 95
S/N RATIO	41 dB
TYPE-C	USB 2.0 (x1)
SUPPORT OTG PROTOCOL	USB 2.0 OTG (x1)
MIC	Dual digital MIC
POWER SUPPLY	Type-C USB, 5V
WORKING TEMPERATURE	-10°C to 60°C
CABLE	1M
OPERATING SYSTEM	Android, Windows 10/11, Linux with UVC
DIMENSIONS	3.4 x 1.5 x 1.3 in

1080p High Definition Resolution

Achieve crystal-clear identification of moving objects and people with precise 1920x1080 resolution.

Enhanced Dynamic Range

Maintains exceptional clarity and detail in varying lighting conditions, from bright to dim environments.

Wide 92-Degree Field Of View

Captures a broad area simultaneously, enhancing the camera's ability to monitor and analyze multiple activities and details in a single frame.

USB 2.0 High Speed

Provides up to 480 Mbps data transfer rates and sufficient power supply, ensuring broad compatibility and reliable performance.

Compact And Discreet Design

Seamlessly integrate with monitors and digital signage, blending into any setting without drawing attention.

Stay in Touch

Back to Contents



Chat Live with a Real Person

www.azulle.com

US-Based Technical Support

786-233-6769 (Ext 1)

E-mail Us

sales@azulle.com

US-Based Customer Service

786-233-6769 (Ext 3)